

Phantom Hands

*Indian modern
furniture*





Introduction

Phantom Hands makes handcrafted furniture rooted in Indian Modernism. Our collections range from re-editions of mid-century classics to contemporary objects created in collaboration with acclaimed designers.

Our first collection, Project Chandigarh, was launched in May 2015 with three chair models. It has since expanded to include re-editions of several pieces of furniture that were originally designed for the city of Chandigarh under the guidance of Swiss architect Pierre Jeanneret.

Subsequently we have collaborated with contemporary designers such as INODA+SVEJE, x+l, Derek Welsh, Padmaja Krishnan, Klemens Grund and Nityan Unnikrishnan. Their designs draw inspiration from the philosophy and form of Indian Modernism and push the boundaries of traditional Indian craftsmanship.

Our name 'Phantom Hands' is a nod to generations of artisans whose passed-down skills manifest in each piece of furniture we make. Our workshop in Bengaluru, India is an ecosystem of skilled carpenters, wood polishers, cane weavers, upholsterers, and tailors from craft communities across the country.

Our name 'Phantom Hands' is a nod to generations of artisans whose passed-down skills manifest in each piece of furniture we make.

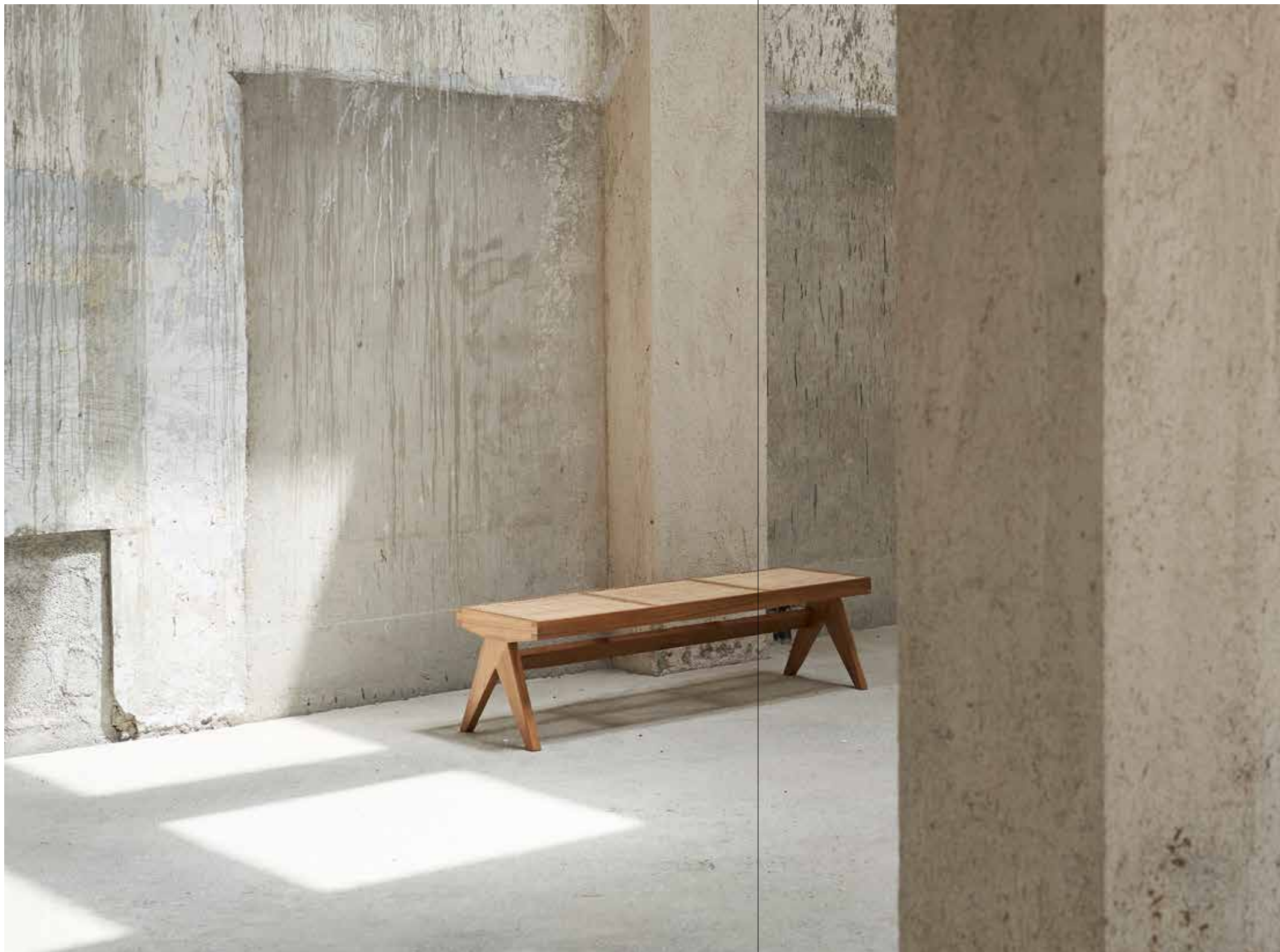
Contents

<i>Mid-century Modern</i>	
Project Chandigarh	007
Padmaja Krishnan	030
Aditya Prakash	034
<i>Contemporary Modern</i>	
INODA+SVEJE	041
x+l	051
Derek Welsh	068
Klemens Grund	073
Nityan Unnikrishnan	080



PHOTOGRAPHER: REUBEN PARIS

Mid-Century Modern



PHOTOGRAPHER: MARTIEN MULDER

Project Chandigarh



Chandigarh Capital Project Design Team

The Project Chandigarh Collection is our homage to the modernist furniture created for the city of Chandigarh by Pierre Jeanneret and his team of architects and designers in the 1950s. Our re-editions follow the craftsmanship and philosophy of making that governed their first versions. Improving upon the original designs structurally and materially, our furniture remains true to their handcrafted carpentry and uses traditional joinery techniques. As in the past, the natural rattan cane used for the seats and backs of our chairs is peeled and woven by hand, by highly-skilled weavers with generations of craft knowledge.



Kangaroo Chair
Dimensions (cm)
H 60.0 / D 76.5 / W 58.5
Seat Height: 34.5

Library Chair
Dimensions (cm)
H 76.5 / D 46.0 / W 47.0
Seat Height: 45.0



Office Armchair X Leg
Dimensions (cm)
H 78.0 / D 57.5 / W 53.0
Arm Height: 67.0
Seat Height: 44.0



Laundry Basket
Dimensions (cm)
H 44.0 / D 69.0 / W 44.5

Cross Easy Chair

Dimensions (cm)
H 74.5 / D 76.5 / W 57.0
Arm Height: 62.0
Seat Height: 36.5



Easy Armchair

Dimensions (cm)
H 70.0 / D 74.0 / W 57.0
Arm Height: 58.5
Seat Height: 37.0





High Stool with Cane Seat

Dimensions (cm)
H 70.0 / D 47.5 / W 47.5
Leg Width: 47.5
Seat Diameter: 38.5



Armless Dining Chair

Dimensions (cm)
H 86.0 / D 54.0 / W 44.5
Seat Height: 45.0



Teak and Cane Bench

Dimensions (cm)
H 39.5 / L 137.0 / W 45.5



Office Chair V Leg

Dimensions (cm)
H 77.5 / D 60.5 / W 51.0
Arm Height: 66.5
Seat Height: 43.5

Office Chair V Leg - Children's Edition

Dimensions (cm)
H 57.0 / D 42.5 / W 37.5
Arm Height: 49.0
Seat Height: 32.0

Low Cane Stool
Dimensions (cm)
H 42.0 / L 39.0 / W 32.0



Counter Stool
Dimensions (cm)
H 63.0 / D 42.5 / W 42.5
Leg Width: 42.5
Seat Diameter: 35.5



Square Table
Dimensions (cm)
H 71.0 / D 91.5 / W 91.5





Upholstered Armless Chair
Dimensions (cm)
H 76.0 / D 84.0 / W 55.5
Seat Height: 40.5



Upholstered Armless Sofa
Dimensions (cm)
H 76.0 / D 84.0 / W 140.5
Seat Height: 40.5



Upholstered Sofa
Dimensions (cm)
H 78.0 / D 84.0 / W 150.0
Arm Height: 63.5
Seat Height: 42.0



Upholstered Office Chair
Dimensions (cm)
H 90.0 / D 69.5 / W 58.0
Arm Height: 68.0
Seat Height: 47.0



Coffee Table - Glass Top
Dimensions (cm)
H 38.0 / L 122.0 / W 46.0
Glass Top Height: 36.5

Coffee Table - Three Legged
Dimensions (cm)
H 41.5 / D 80.0 / W 89.0



Upholstered Easy Armchair
Dimensions (cm)
H 78.0 / D 84.0 / W 70.5
Arm Height: 63.5
Seat Height: 42.0

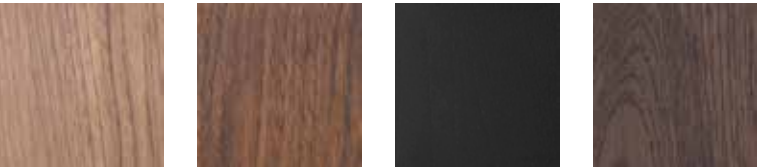
Options

For the Project Chandigarh Collection



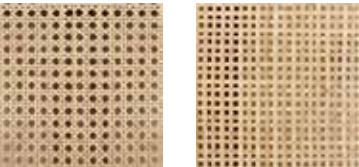
Office Chair V Leg
Easy Armchair
Armless Dining Chair
Square Table

Wood Finish Options



Natural Teak
Dark Stain
Black
Z4 Walnut (not offered for the Square Table)

Cane Weave Options



Diamond Weave
Cross Weave



Office Chair V Leg - Children's Edition
Cross Easy Chair
Kangaroo Chair
Library Chair
Office Armchair X Leg



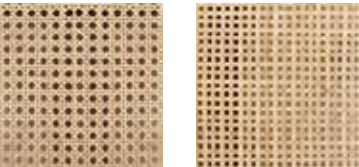
High Stool with Cane Seat
Counter Stool
Teak and Cane Bench
Laundry Basket
Low Cane Stool

Wood Finish Options



Natural Teak
Dark Stain
Z4 Walnut

Cane Weave Options



Diamond Weave
Cross Weave



Upholstered Easy Armchair
Upholstered Armless Chair
Upholstered Sofa
Upholstered Armless Sofa

Wood Finish Options



Natural Teak
Dark Stain
Z3 Stripped Black
Z4 Walnut
Z7 Charcoal

Upholstery Options



Andaman Silver Cloud
Andaman Shitake
Andaman Fallen Rock
Andaman Beluga
Andaman Slate
Shekpura
Bompuka Iron



Bompuka Ash
Bompuka Brushed Nickel
Allure - Beige
Allure - Sap Green
Warwick - Atlantic
Warwick - Cinder
Warwick - Orchid



Warwick - Mallard
Warwick - Shadow
Warwick - Pearl
Warwick - Pine

Options

For the Project Chandigarh Collection



Upholstered Office
Armchair

Wood Finish Options



Natural Teak



Dark Stain



Z3 Stripped Black



Z4 Walnut



Z7 Charcoal

Upholstery Options



Amkunj
Atmosphere



Amkunj
Elephant Skin



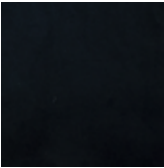
Amkunj
Mourning Dove



Allure - Beige



Allure
- Sap Green



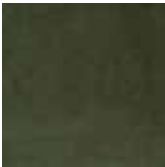
Warwick
- Atlantic



Warwick - Cinder



Warwick
- Orchid



Warwick - Mallard



Warwick
- Shadow



Warwick - Pearl



Warwick - Pine



Coffee Table -
Glass Top



Coffee Table -
Three Legged

Wood Finish Options



Natural Teak



Dark Stain

Padmaja Krishnan



PADMAJA KRISHNAN is a textile designer based in Mumbai, India. Born in Kolkata, Padmaja Krishnan studied commerce at Kolkata University and fashion design at National Institute of Fashion Technology, New Delhi. She creates “non-conformative, quirky and peaceful” clothing, accessories and handcrafted products. In her designs, tradition is deeply respected even as it is brought into a close dance with the contemporary and the futuristic.

The KeSa Upholstery Collection by Padmaja takes forth our experiments with handmade Indian textiles as upholstery. It also forwards our aim to use upcycled materials in making our products. The KeSa fabric is an upcycled, patchwork textile created through an intense process of collecting discarded fabric scraps, arranging them with care into specific patterns and sewing them one piece at a time by hand, and then by machine. Each piece of the collection, featuring the Upholstered Easy Armchair from our Project Chandigarh Collection, is truly unique, even though they belong to a specific ‘colourway’ created by Padmaja.



**KeSa Ink and Burnt
Cobalt-Coir Wood Finish**
Dimensions (cm)
H 78.0 / D 84.0 / W 70.5
Seat Height: 42.0
Arm Height: 63.5



**KeSa Cobalt and
Burnt Cobalt-Coir Wood Finish**



**KeSa Sand and
Mocha-Driftwood
Wood Finish**



**Indigo and
P1 Black Wood Finish**

Aditya Prakash



ADITYA PRAKASH was an architect, designer, painter, photographer and writer. Born in 1924 in the north Indian city of Muzaffarnagar, he is often described as one of India's first modernist architects and worked as a junior architect at the Chandigarh Capital office under Le Corbusier and Pierre Jeanneret. During his tenure here, from 1952 to 1963, he designed a variety of public buildings, including the Chandigarh College of Architecture, Central Craft Institute, Indo Swiss Training Centre, Government of India Text Book Press, District Courts and several theatres. He died in 2008, leaving behind a rich legacy of design, art, photography, books, and writing.

The AP Collection is a tribute to his forays into furniture making. It consists of a series of re-editions of chairs originally designed and made by him. Phantom Hands developed these earlier designs in collaboration with his son and eminent architectural historian Vikamaditya Prakash, upgrading them structurally and materially, but carefully holding on to their aesthetic legacy. The final result is a suite of furniture that is both historically rooted and staunchly contemporary.



AP Lounge Chair
Dimensions (cm)
H 73.0 / D 67.0 / W 62.0
Arm Height: 55.0
Seat Height: 36.0



AP Dining Chair
Dimensions (cm)
H 84.0 / D 45.5 / W 48.0
Seat Height: 44.0

Options

For the AP Collection by Aditya Prakash

Wood Finish Options



Natural Teak



Dark Stain

Upholstery Options

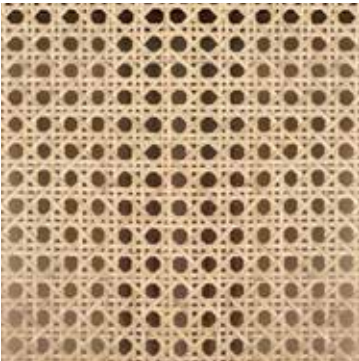


Taboga Dove

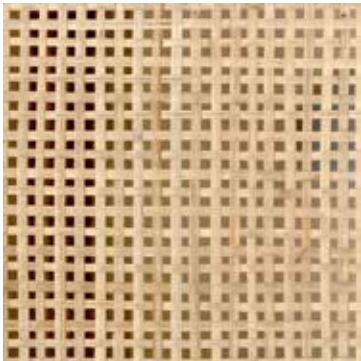


Sivan Natural

Cane Weave Options



Diamond Weave



Cross Weave

Contemporary Modern



PHOTOGRAPHER: MARTIEN MULDER

INODA+SVEJE



IMAGE COURTESY MARK ALEXANDER



Kyoko Inoda and Nils Sveje

INODA+SVEJE is a multi-disciplinary design practice comprising Kyoko Inoda (Japan) and Nils Sveje (Denmark). Founded in Copenhagen in 2000, they moved their base of operations to Milan in 2003. Together they have developed an harmonious and sensitive approach applied in both the design process and the resulting form and aesthetics.

Kyoko and Nils have been collaborating with Phantom Hands since 2017 and have designed two collections: Muṅgāru and Tangāli. The Muṅgāru Collection draws inspiration in equal parts from India's modernist legacy and the skill that traditional Indian craft-based production offers.

Having seen the level of skill and dexterity of our cane weavers during their first visit to our Bengaluru workshop in 2017, Kyoko and Nils returned the year after with the intention of making cane the headliner of their designs. They pushed our weavers to make patterns that are not traditional to Indian furniture and that is now the signature style of the Tangāli Collection.



Tangāli Side Table
Dimensions (cm)
H 38.5 / D 56.0 / W 56.0
Cane Shelf Height: 32.0



Tangāli Bench
Dimensions (cm)
Standard: H 41.0 / L 180.0 / W 43.5
Compact: H 41.0 / L 140.0 / W 43.5





Tangāli Coffee Table
Dimensions (cm)
H 41.0 / D 100.0 / W 105.0
Cane Shelf Height: 25.5
Variations (Glass Top): Clear Glass and Brownish-tinted Glass



Tangāli Modular Chairs
Dimensions (cm)
Armchair: H 72.5 / D 60.5 / W 71.0
One Arm Chair: H 72.5 / D 60.5 / W 64.0
Armless Chair: H 72.5 / D 60.5 / W 56.5
Arm Height: 58.5
Seat Height: 38.0



Tangāli Day Bed
Dimensions (cm)
H 41.0 / L 190.0 / W 74.5

Options

For the Tangāli Collection by INODA+SVEJE

Wood Finish Options

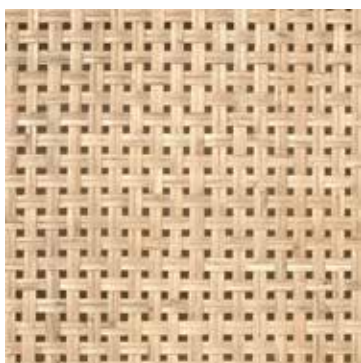


Natural Teak



Dark Stain

Cane Weave



Tangāli Weave



Muṅgāru Easy Armchair
Dimensions (cm)
H 73.5 / D 63.0 / W 71.5
Arm Height: 57.0
Seat Height: 39.5



Muṅgāru Dining Chair
Dimensions (cm)
H 77.0 / D 50.5 / W 49.5
Seat Height: 45.5



Muṅgāru Side Table
Dimensions (cm)
H 50.5 / D 33.0 / W 39.5

Options

For the Muṅgāru Collection by INODA+SVEJE

Wood Finish Options



Natural Teak



Dark Stain

Cane Weave



Diamond Weave

|
+
x



Leon van Boxtel and Xander Vervoort

x+l stands for Xander Vervoort and Leon van Boxtel, designers based in Amsterdam, Holland. With a background in theatre and art, the duo founded x+l studio in 1996, focussing on interior design. Through the years they worked in several disciplines—photography, advertising, stage design, fashion and exhibition design.

The objects designed by x+l for Phantom Hands are inspired by their interest in art and architecture, as well as their deep appreciation of simple, honest materials and structures. If the legs of the x+l 01 Coffee Table are an homage to Le Corbusier, the idea for the x+l 05 Modular Sofa was an evolution of their interactions with textile maker Ravi Khemka of Zanav Home. Besides x+l's distinctive aesthetic, upcycling and zero waste are important themes in the creation of some of the objects in this collection.



x+l 01 Coffee Table

Dimensions (cm)
H 30.0 / D 138.0 / W 98.0



x+l 02 Room Divider

Dimensions (cm)
Standard: H 160.0 / L 155.5 / W 45.0
Tall: H 180.0 / L 155.5 / W 45.0



x+l 04 Floor Lamp
Dimensions (cm)
H 140.0 / D 34.0 / W 34.0



x+l 03 Table Lamp
Dimensions (cm)
H 84.5 / D 40.5 / W 40.5





x+l 05 Modular Sofa
Dimensions (cm)
Armless: H 63.5 / D 89.0 / W 101.0
One Arm: H 63.5 / D 89.0 / W 113.0
Both Arms: H 63.5 / D 89.0 / W 123.0
Seat Height: 38.0



x+l 06 Trestle Table
Dimensions (cm)
Full Size: H 65.0 / D 90.0 / W 240.0
Desk Size: H 65.0 / D 80.0 / W 160.0





x+l 07 BookShelf

Dimensions (cm)
H 15.0 / D 23.0 / W 140.0
Bookend Height: 30.0



x+l 08 SideTable

Dimensions (cm)
Low: H 21.0 / D 37.5 / W 75.0
High: H 35.0 / D 37.5 / W 75.0





x+l 09 Cardhouse Lamp
Dimensions (cm)
H 81.0 / D 25.5 / W 25.5



x+l 10 Wall Cabinet (Split Level Rooms)
Dimensions (cm)
H 50.5 / D 90.0 / W 23.5



x+l 10 Wall Cabinet (Tower of Shadows)
Dimensions (cm)
H 50.5 / D 90.0 / W 23.5



x+l 11 Lounge Chair
Dimensions (cm)
H 64.5 / D 72.5 / W 64.0



Options

For the x+l Collection by x+l



x+l 01 Coffee Table

Wood Finish Options



Natural Teak Dark Stain Textured Natural Teak Textured Dark Stain Textured Black



x+l 02 Room Divider



x+l 06 Trestle Table



x+l 07 BookShelf



x+l 08 SideTable



x+l 10 Wall Cabinet (Split Level Rooms)



x+l 10 Wall Cabinet (Tower of Shadows)

Wood Finish Options



Natural Teak Dark Stain



x+l 03 Table Lamp



x+l 04 Floor Lamp

Wood Finish Options



Natural Teak Dark Stain Black

Upholstery Options



Haveli Natural Haveli Ivory Tanga Natural



x+l 05 Modular Sofa

Wood Finish Options



Natural Teak Dark Stain

Upholstery Options



Andaman Tarmac Andaman Plantation Andaman Shitake Andaman Bracken Andaman Beluga

Options

For the x+l Collection by x+l



x+l 09 Cardhouse
Lamp

Wood Finish Options



Z4 Walnut



Distressed Black

Upholstery



Tanga Natural



x+l 11 Lounge
Chair



Product Options



Burnt Cobalt Coir
Wood Finish

with



Thasra Night Sky
Upholstery



Dark Stain
Wood Finish

with



Thasra Sequoia
Upholstery

Derek Welsh



DEREK WELSH is a woodworker and furniture designer who lives and works in Glasgow. Starting as an apprentice at a small carpentry and joinery firm in Scotland, he has worked with wood for over 25 years and stayed true to his craft training. His work reflects his regard for the many abilities (and limitations) of the human hand, the joys of crafting manually and the rigour it demands. Derek has designed and produced bespoke interiors and furniture for residential and commercial clients, including the iconic fashion brand Paul Smith.

The DW Collection was developed via a remote collaboration between Derek and Phantom Hands in the midst of the pandemic-enforced lockdown. The collection celebrates simplicity and pure joinery. Derek's expertise in traditional joinery forms the basis for the construction of the products in this collection.



DW 01 Stool
Dimensions (cm)
H 41.5 / D 39.5 / W 39.5
Leg Width: 39.5
Seat Diameter: 33.0

DW 02 BookShelf
Dimensions (cm)
Two Uprights:
H 78.0 / D 18.0 / W 110.0
Three Uprights:
H 78.0 / D 18.0 / W 175.5
Width Between Uprights: 60.5
Height Between Shelves: 41.5



DW 03 Chair
Dimensions (cm)
H 81.0 / D 46.0 / W 50.0
Seat Height: 46.0

Options

For the DW Collection by Derek Welsh

Wood Finish Options



Natural Teak



Dark Stain



Black



Blue (only for the DW 01 Stool)

Klemens Grund



KLEMENS GRUND is a German furniture designer and craftsman based in St. Gallen, Switzerland. He graduated from the Academy of Crafts Gut Rosenberg, Aachen in 2007 and has worked as a master designer at Pritzker Prize winner Peter Zumthor's architectural studio in Haldenstein before founding his own design studio in 2014 in Cologne, Germany. He has been awarded the NRW State Prize, the Abraham & Roentgen Prize and the Stylepark Selected Award. Apart from his independent design practice, Klemens works at the 3D studio of Kunstgiesserei Sankt Gallen, an art production workshop.

The Nandi Collection designed by Klemens reflects his experiments with simplicity, frugality and everyday objects. Furniture, he says, manifests our daily life and anchors us to the world. It creates a feeling of home and provides us with the tools to make new routines. Each piece in this collection was thus conceived with an eye on the quotidian. The pieces are also a reflection of Klemens' time in India and our Bengaluru workshop, working with carpenters, happening upon new craft techniques, customs, materials and lore.



Nandi Day Bed
Dimensions (cm)
H 35.0 / L 204.5 / W 92.5



Nandi Study Table & Stool
Dimensions (cm)
Study Table: H 75.0 / L 92.5 / W 57.5
Stool: H 47.0 / D 37.0 / W 35.5





Nandi Dining Table
Dimensions (cm)
6-seater: H 73.0 / D 90.0 / L 225.0
8-seater: H 73.0 / D 90.0 / L 280.0



Nandi Dining Chair
Dimensions (cm)
H 79.0 / D 47.0 / W 50.5
Seat Height: 45.5

Nandi Bench
Dimensions (cm)
H 42.0 / L 204.5 / W 50.5



Options

For the Nandi Collection by Klemens Grund

Wood Finish Options



Natural Teak



Dark Stain

Upholstery Options



Sivan Natural



Thasara Ivory

Cane Weave



Nandi Weave

Nityan Unnikrishnan



NITYAN UNNIKRISHNAN is an artist and designer based in Goa, India. Following graduate studies in Industrial Design at the National Institute of Design (NID), Ahmedabad, he practiced as a potter and worked on crafts development projects in various parts of rural India. In 2010 he began painting and sculpting full time and has exhibited consistently since.

His entry into furniture design was incidental. What began with making a plywood dining table for his home continued over the decade that followed, with a number of furniture design projects, mostly for friends and family. One of these pieces, a chair he designed in 2013 as a birthday present for a friend, caught the eye of Deepak Srinath, co-founder of Phantom Hands, around the time he was setting up the brand. Subtle hints towards a collaboration were finally formalized in 2022 when Nityan visited our Bengaluru workshop.

The Palakkad Chair, which evolved from the earlier version designed in 2013, is inspired by Japanese-American furniture maker George Nakashima's work. The spindle emerges as its central character, with slim forms in the backrest and thicker versions for the legs of the chair.



Palakkad Chair
Dimensions (cm)
H 85.5 / D 52.5 / W 47.0
Seat Height: 45.5

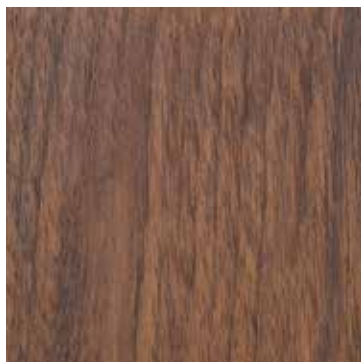
Options

For the Palakkad Chair by Nityan Unnikrishnan

Wood Finish Options



Natural Teak

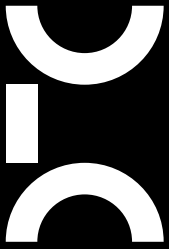


Dark Stain

Cane Weave



Palakkad Weave



Phantom Hands

Office / Workshop

*12/1, A5, Lakshmipura Main Road,
Abbigere, Bengaluru, Karnataka 560090, India*

+91 7760329900

info@phantomhands.in

phantomhands.in